



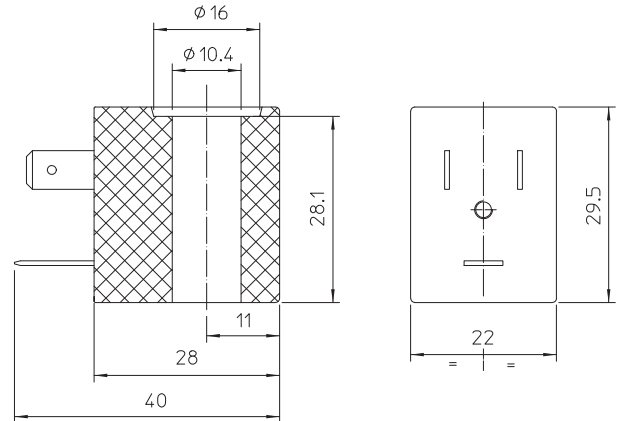
COILS 22 mm x Ø 10 mm

LBA05024AS
 ÷
LBV08024HU

COIL **LBA** Coil housing material: PA - Black polyamide - class F (155°C)
LBF Coil housing material: PPS - Black poliphenylsulphide - class H (180°C)
LBV Coil housing material: PET - Black Polyethylene - class H (180°C)

Winding: In class H
Electrical connections: With connector EN 175301-803 whellbase 11
 Protection degree IP 65 EN 60529 (DIN 40050)

COIL HOUSING AND COIL FORMER MATERIAL ARE MADE BY 100% VIRGIN MATERIAL.



MATERIAL ON STOCK:

Code	Power	Voltages Frequency	ED	Ambient temperature	Approvals
LBA05024AS	10 VA	24 ~ 50	100%	- 10 + 40°C	CE
LBA05024CS	5 W	24 ---	100%	- 10 + 40°C	CE
LBA05110AS	10 VA	110 ~ 50 120 ~ 60	100%	- 10 + 40°C	CE
LBA05230AS	10 VA	230 ~ 50 240 ~ 60	100%	- 10 + 40°C	CE
LBV05024AV	11,5 VA	24 ~ 50	100%	- 20 + 60°C	CE - VDE
LBV05024BW	12,5 VA	24 ~ 60	100%	- 20 + 60°C	CE - UL - CSA
LBV05024CY	7 W	24 ---	100%	- 20 + 60°C	CE - UL - CSA - VDE
LBV05024DY	11 VA	24 ~ 50-60	100%	- 20 + 60°C	CE - UL - CSA - VDE
LBV05110AY	10 VA	110 ~ 50 120 ~ 60	100%	- 20 + 60°C	CE - UL - CSA - VDE
LBV05110BU	13,5 VA	110 ~ 60	100%	- 20 + 40°C	CE - UL
LBV05220BU	13,5 VA	220 ~ 60	100%	- 20 + 40°C	CE - UL
LBV05230AY	11,5 VA	230 ~ 50 240 ~ 60	100%	- 20 + 60°C	CE - UL - CSA - VDE
LBV08024HU	10 W	24 ---	50% (1)	- 20 + 40°C	CE - UL

NOMINAL VOLTAGE DC + 10% - 5%
TOLERANCES: AC + 10% - 15%

(1) Standard cycle time 1 minute, for different requirements please contact our commercial offices | The power values are indicative, as they change as a function of magnetic kit used and of the application sector of reference | Other voltages and power absorptions available on demand and for quantities.

The "ODE" reserves the right to carry out technical and aesthetic modifications without prior notice.



COILS 30 mm x Ø 13 mm

BDA08012AS
÷
BDV08230AY

COIL **BDA**
BDV

Coil housing material: PA - Black polyamide - class F (155°C)

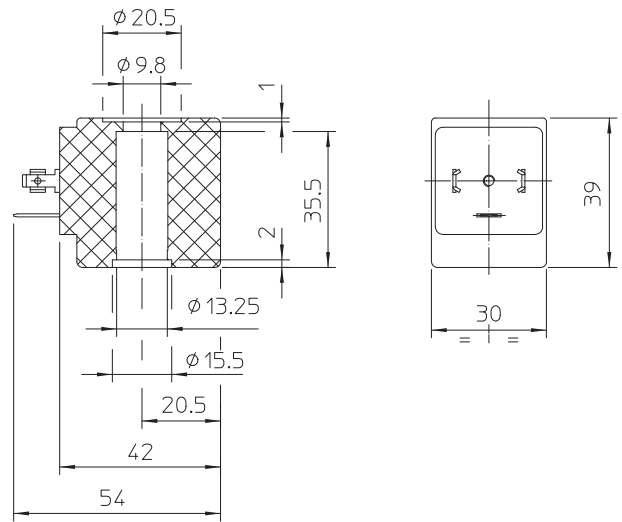
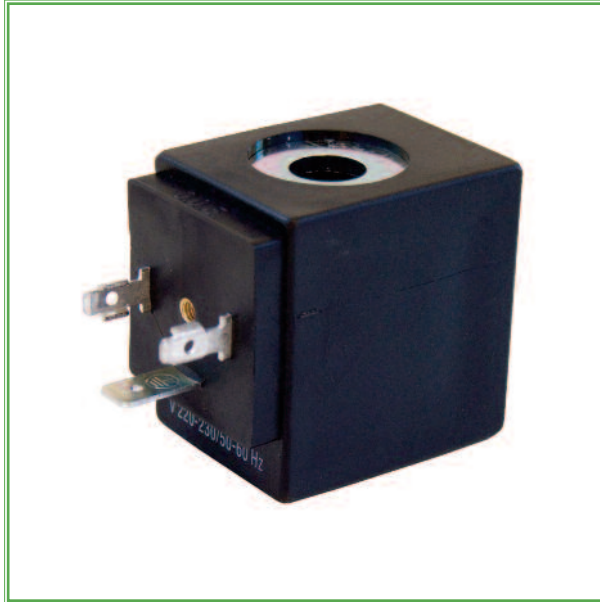
Coil housing material: PET - Black polyethylene - class H (180°C)

Winding: In class H

Electrical connections: With connector EN 175301-803 paragraph 5.3.1

Protection degree IP 65 EN 60529 (DIN 40050)

COIL HOUSING AND COIL FORMER MATERIAL ARE MADE BY 100% VIRGIN MATERIAL.



MATERIAL ON STOCK:

Code	Power	Voltages Frequency	ED	Ambient temperature	Approvals
BDA08012AS	14,5 VA	12 ~ 50	100%	- 10°C + 40°C	CE
BDA08012CS	8 W	12 ==	100%	- 10°C + 40°C	CE
BDA08024AS	14,5 VA	24 ~ 50	100%	- 10°C + 40°C	CE
BDA08024CS	8 W	24 ==	100%	- 10°C + 40°C	CE
BDA08024DS	14,5 VA	24 ~ 50/60	100%	- 10°C + 40°C	CE
BDA08048AS	14,5 VA	48 ~ 50	100%	- 10°C + 40°C	CE
BDA08110DS	14,5 VA	110 ~ 50/60	100%	- 10°C + 40°C	CE
BDA08115BS	14,5 VA	115 ~ 60	100%	- 10°C + 40°C	CE
BDA08200DS	14,5 VA	200 ~ 50/60	100%	- 10°C + 40°C	CE
BDA08223DS	14,5 VA	220/230 ~ 50/60	100%	- 10°C + 40°C	CE
BDA08230CS	8 W	230 ==	100%	- 10°C + 40°C	CE
BDA08240AS	14,5 VA	240 ~ 50	100%	- 10°C + 40°C	CE
BDA08380DS	14,5 VA	380 ~ 50/60	100%	- 10°C + 40°C	CE

The "ODE" reserves the right to carry out technical and aesthetic modifications without prior notice.

BDA08012AS

÷

BDV08230AY

Code	Power	Voltages Frequency	ED	Ambient temperature	Approvals
BDV08012CY	11 W	12 ===	100%	- 20°C + 60°C	CE - UL - CSA - VDE
BDV08024CY	11 W	24 ===	100%	- 20°C + 60°C	CE - UL - CSA - VDE
BDV08024DY	17 VA	24 ~ 50/60	100%	- 20°C + 60°C	CE - UL - CSA - VDE
BDV08110AY	15 VA	110 ~ 50 120 ~ 60	100%	- 20°C + 60°C	CE - UL - CSA - VDE
BDV08110CS	8 W	110 ===	100%	- 20°C + 40°C	CE
BDV08110BW	25 VA	110 ~ 60	100%	- 20°C + 40°C	CE - UL - CSA
BDV08230AY	16 VA	230 ~ 50 240 ~ 60	100%	- 20°C + 60°C	CE - UL - CSA - VDE

NOMINAL VOLTAGES DC + 10% - 5%
TOLERANCES: AC + 10% - 15%

The power values are indicative, as they change as a function of magnetic kit used and of the application sector of reference | Other voltages and power absorptions available on demand and for quantities.



COILS 36 mm x Ø 13 mm

UDA12024AS

÷

UDV16024CY

COIL

UDA
UDV

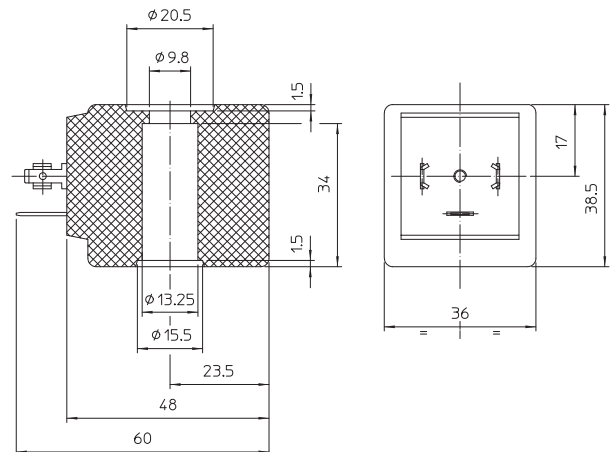
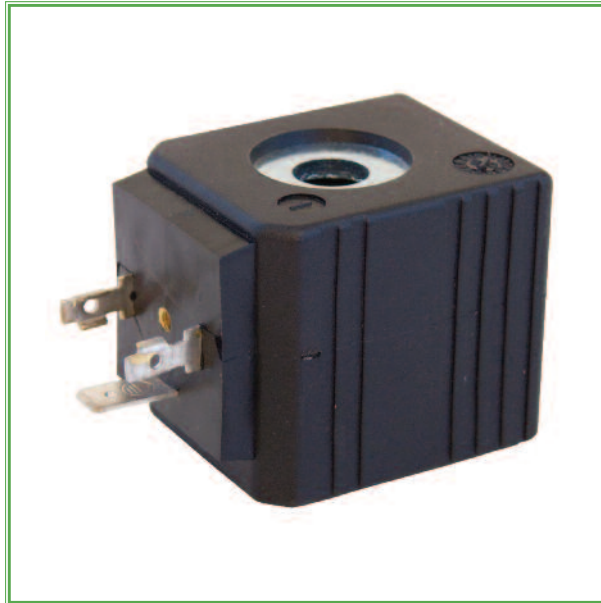
Coil housing material: PA - Black polyamide - class F (155°C)

Coil housing material: PET - Black Polyethylene - class H (180°C)

Winding: In class H

Electrical connections: With connector EN 175301-803 paragraph 5.3.1
Protection degree IP 65 EN 60529 (DIN 40050)

COIL HOUSING AND COIL FORMER MATERIAL ARE MADE BY 100% VIRGIN MATERIAL.



MATERIAL ON STOCK:

Code	Power	Voltages Frequency	ED	Ambient temperature	Approvals
UDA12024AS	23 VA	24 ~ 50	100%	- 10°C + 40°C	CE
UDA12024CS	12 W	24 ~	100%	- 10°C + 40°C	CE
UDA12110DS	23 VA	110 ~ 50/60	100%	- 10°C + 40°C	CE
UDA12230AS	23 VA	230 ~ 50	100%	- 10°C + 40°C	CE
UDV12024CY	13 W	24 ~	100%	- 20°C + 60°C	CE - UL - CSA - VDE
UDV12112DW	23 VA	110/120 ~ 50/60	100%	- 20°C + 40°C	CE - UL - CSA
UDV12230AY	17 VA	230 ~ 50 240 ~ 60	100%	- 20°C + 60°C	CE - UL - CSA - VDE
UDV12230DW	25 VA	230 ~ 50/60	100%	- 20°C + 40°C	CE - UL - CSA
UDV16024CY	16 W	24 ~	100%	- 20°C + 40°C	CE - UL - CSA - VDE

NOMINAL VOLTAGES DC + 10% - 5%
TOLERANCES: AC + 10% - 15%

The power values are indicative, as they change as a function of magnetic kit used and of the application sector of reference | Other voltages and power absorptions available on demand and for quantities.

The "ODE" reserves the right to carry out technical and aesthetic modifications without prior notice.



COILS 52 mm x Ø 13 mm

GDH14012CS

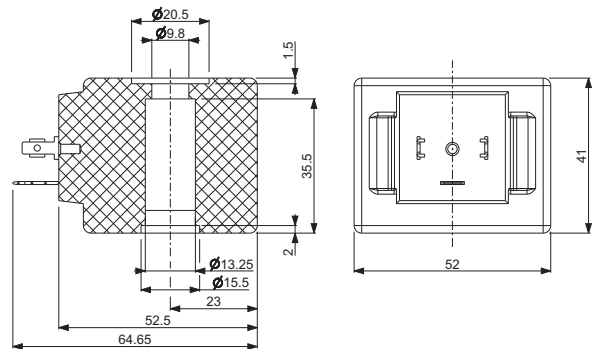
÷

GDV14230AY

COIL **GDH** Coil housing material: PPS - Black polyphenylene sulfide - class N (200°C)
GDV Coil housing material: PET - Black Polyethylene - class H (180°C)

Winding: In class N
Electrical connections: With connector EN 175301-803 paragraph 5.3.1
 Protection degree IP 65 EN 60529 (DIN 40050)

COIL HOUSING AND COIL FORMER MATERIAL ARE MADE BY 100% VIRGIN MATERIAL.



MATERIAL ON STOCK:

Code	Power	Voltages Frequency	ED	Ambient temperature	Approvals
GDH14012CS	23 W	12 ~	100%	- 20 + 40°C	CE
GDH14024CS	24 W	24 ~	100%	- 20 + 40°C	CE
GDV14012CY	14 W	12 ~	100%	- 20 + 60°C	CE - UL - CSA - VDE
GDV14024CY	14 W	24 ~	100%	- 20 + 60°C	CE - UL - CSA - VDE
GDV14024DY	27 VA	24 ~ 50/60	100%	- 20 + 60°C	CE - UL - CSA - VDE
GDV14048DS	26 VA	48 ~ 50/60	100%	- 20 + 40°C	CE
GDH14220CS	14 W	220 ~	100%	- 20 + 40°C	CE
GDV14230AY	31 VA	230 ~ 50 240 ~ 60	100%	- 20 + 60°C	CE - UL - CSA - VDE

NOMINAL VOLTAGE TOLERANCES:
 DC +10% - 5%
 AC +10% - 15%

The power values are indicative, as they change as a function of magnetic kit used, from ambient temperature and of the application sector of reference | Other voltages and power absorptions available on demand and for quantities.

The "ODE " reserves the right to carry out technical and aesthetic modifications without prior notice.